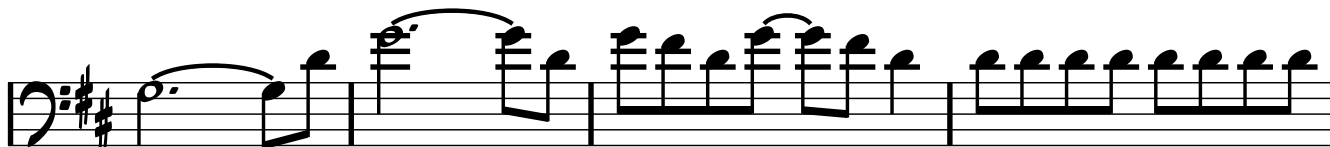
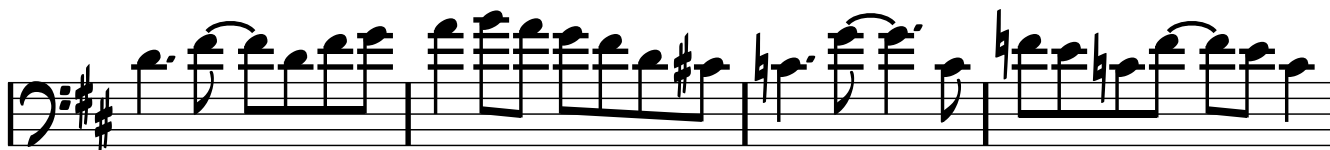
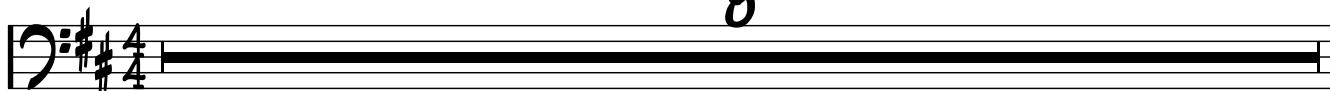


SWEET CHILD O' MINE

GUNS 'N' ROSES

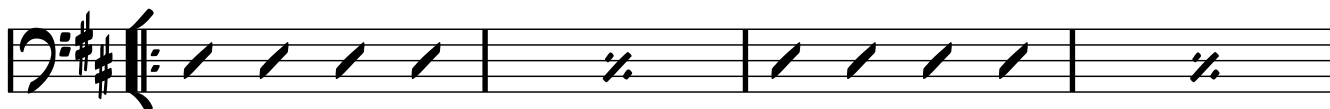
8



GUITAR

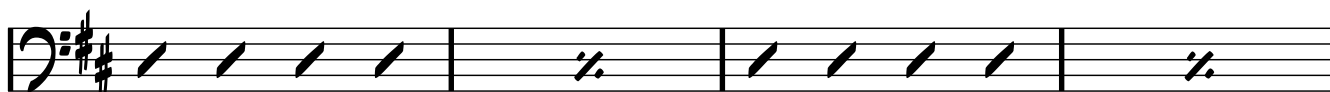
D

C



G

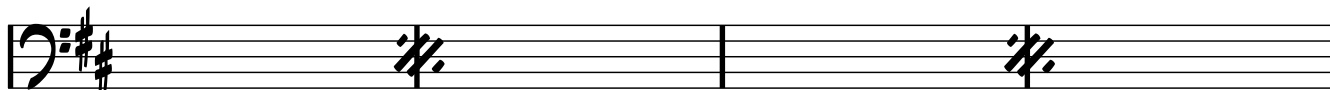
D



VERSE

8

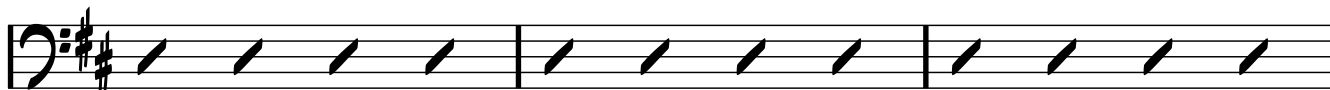
8



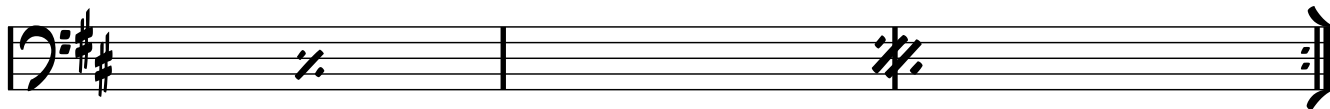
Am

C

D



4

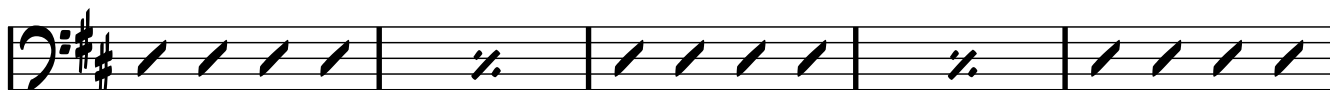


GUITAR

D

C

G



D

8

Musical staff with slash notation and repeat signs. The staff is in the key of D major (two sharps). It contains four measures of slash notation. The first and third measures have a double bar line with repeat dots. The second measure has a double bar line with a repeat sign. The fourth measure has a double bar line with a repeat sign and a fermata.

Am

C

D

x4

Musical staff with slash notation and chord labels. The staff is in the key of D major. It contains four measures of slash notation. Above the first measure is 'Am', above the second is 'C', and above the third is 'D'. The staff ends with a double bar line, a repeat sign, and a key signature change to D major (two sharps), followed by 'x4'.

Em

Cm

Bm

Musical staff with slash notation and chord labels. The staff is in the key of D major. It contains three measures of slash notation. Above the first measure is 'Em', above the second is 'Cm', and above the third is 'Bm'. The staff ends with a double bar line.

Am

x4

Musical staff with slash notation and a repeat sign. The staff is in the key of D major. It contains four measures of slash notation. The staff ends with a double bar line, a repeat sign, and a fermata.

Em

G

A

C

D

G

x4

Musical staff with slash notation and chord labels. The staff is in the key of D major. It contains six measures of slash notation. Above the first measure is 'Em', above the second is 'G', above the third is 'A', above the fourth is 'C', above the fifth is 'D', and above the sixth is 'G'. The staff ends with a double bar line, a repeat sign, and a fermata.

BREAKDOWN

Em

G

A

C

D

G

x4

Musical staff with slash notation and chord labels. The staff is in the key of D major. It contains six measures of slash notation. Above the first measure is 'Em', above the second is 'G', above the third is 'A', above the fourth is 'C', above the fifth is 'D', and above the sixth is 'G'. The staff ends with a double bar line, a repeat sign, and a fermata.

Em

G

A

C

D

G

Musical staff with slash notation and chord labels. The staff is in the key of D major. It contains six measures of slash notation. Above the first measure is 'Em', above the second is 'G', above the third is 'A', above the fourth is 'C', above the fifth is 'D', and above the sixth is 'G'. The staff ends with a double bar line, a repeat sign, and a fermata.

Em

G

A

Musical staff with slash notation and a triplet. The staff is in the key of D major. It contains four measures of slash notation. Above the first measure is 'Em', above the second is 'G', and above the third is 'A'. The fourth measure contains a triplet of eighth notes. The staff ends with a double bar line.

Em

G

A

C

D

Em

Musical staff with slash notation and diamond symbols. The staff is in the key of D major. It contains six measures of slash notation. Above the first measure is 'Em', above the second is 'G', above the third is 'A', above the fourth is 'C', above the fifth is 'D', and above the sixth is 'Em'. The staff ends with a double bar line.