

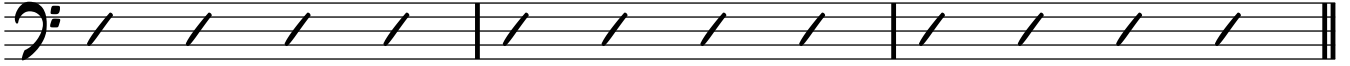
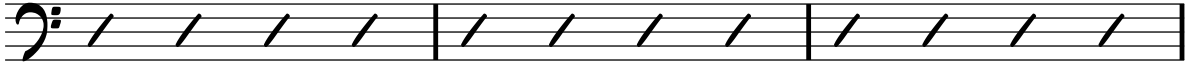
A KIND OF MAGIC

QUEEN

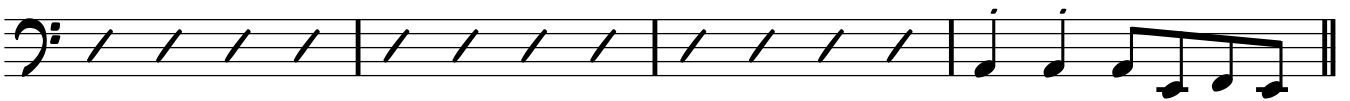
♩ = 131

VOX IN

BASS GUITAR



KEYS IN



A

B



D

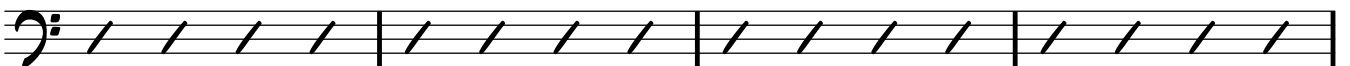
A



PRE-CHORUS

F#M

D



F#M

E



CHORUS

D

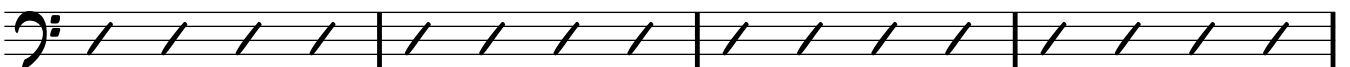
A



E

G

D



E



VERSE

A B

D A

Detailed description: This block contains the first two staves of the Verse section. The first staff is a bass clef with a repeat sign and a double bar line at the end. It contains four measures of rhythmic notation represented by diagonal slashes. Above the first two measures are the chord letters 'A' and 'B'. The second staff is also a bass clef with a repeat sign and a double bar line at the end. It contains four measures of rhythmic notation represented by diagonal slashes. Above the first two measures are the chord letters 'D' and 'A'.

GTR SOLO

D A x 4

Detailed description: This block contains one staff for the GTR SOLO section. It is a bass clef with a repeat sign and a double bar line at the end. It contains four measures of rhythmic notation represented by diagonal slashes. Above the first two measures are the chord letters 'D' and 'A'. To the right of the staff, there is a 'x 4' indicating a four-measure repeat.

PRE-CHORUS

E G D

Esus E

Detailed description: This block contains two staves for the Pre-Chorus section. The first staff is a bass clef with a repeat sign and a double bar line at the end. It contains four measures of rhythmic notation represented by diagonal slashes. Above the first, second, and third measures are the chord letters 'E', 'G', and 'D' respectively. The second staff is also a bass clef with a repeat sign and a double bar line at the end. It contains four measures of rhythmic notation represented by diagonal slashes. Above the first and third measures are the chord letters 'Esus' and 'E' respectively.

CHORUS

D A

E G D

E

Detailed description: This block contains three staves for the Chorus section. The first staff is a bass clef with a repeat sign and a double bar line at the end. It contains four measures of rhythmic notation. The first two measures have eighth notes, and the last two have diagonal slashes. Above the first and third measures are the chord letters 'D' and 'A'. The second staff is a bass clef with a repeat sign and a double bar line at the end. It contains four measures of rhythmic notation represented by diagonal slashes. Above the first, second, and third measures are the chord letters 'E', 'G', and 'D' respectively. The third staff is a bass clef with a repeat sign and a double bar line at the end. It contains four measures of rhythmic notation. The first measure has diagonal slashes, and the second has eighth notes. The third and fourth measures have a quarter note followed by a quarter rest. Above the first measure is the chord letter 'E'.

BASS BREAK

D A

D A

Detailed description: This block contains two staves for the Bass Break section. The first staff is a bass clef with a repeat sign and a double bar line at the end. It contains four measures of rhythmic notation. The first two measures have eighth notes, and the last two have diagonal slashes. Above the first and third measures are the chord letters 'D' and 'A'. The second staff is a bass clef with a repeat sign and a double bar line at the end. It contains four measures of rhythmic notation. The first two measures have eighth notes, and the last two have diagonal slashes. Above the first and third measures are the chord letters 'D' and 'A'.

GUITAR SOLO TO FADE

D A

Detailed description: This block contains one staff for the Guitar Solo to Fade section. It is a bass clef with a repeat sign and a double bar line at the end. It contains four measures of rhythmic notation. The first two measures have eighth notes, and the last two have diagonal slashes. Above the first and third measures are the chord letters 'D' and 'A'.