

GHOSTBUSTERS

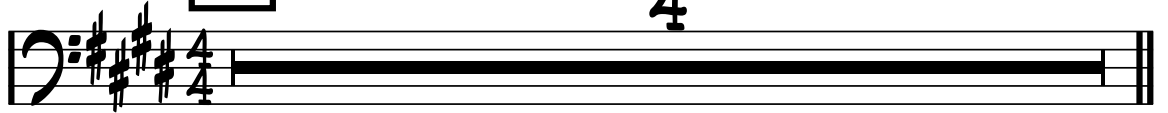
RAY PARKER JR.

♩ = 115

KEYS

4

BASS GUITAR



DRUMS IN

x 4

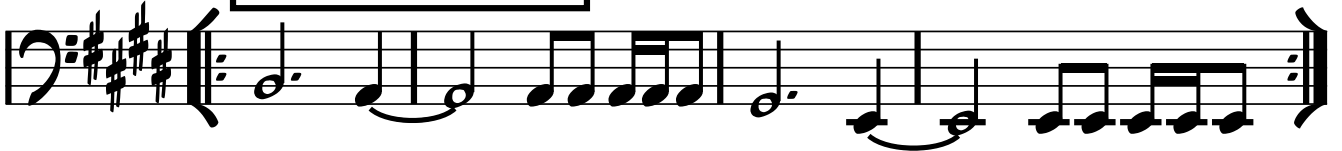


VERSE

x 4



I AIN'T AFRAID OF NO GHOST



INSTRUMENTAL

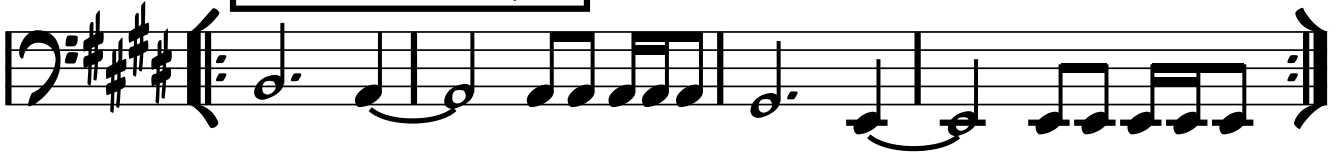


VERSE

x 4



I AIN'T AFRAID OF NO GHOST



WHO YOU GONNA CALL

x 4



MIDDLE 8

x 3

Musical staff in bass clef with a key signature of three sharps (F#, C#, G#). The staff contains a sequence of notes: G2, A2, B2, C3, D3, E3, F3, G3, A3, B3, C4, D4, E4, F4, G4, A4, B4, C5. The notes are grouped with a slur and repeat signs at both ends.

Musical staff in bass clef with a key signature of three sharps. The staff contains a sequence of notes: G2, A2, B2, C3, D3, E3, F3, G3, A3, B3, C4, D4, E4, F4, G4, A4, B4, C5. The notes are grouped with a slur and repeat signs at both ends.

WHO YOU GONNA CALL

x 4

Musical staff in bass clef with a key signature of three sharps. The staff contains a sequence of notes: G2, A2, B2, C3, D3, E3, F3, G3, A3, B3, C4, D4, E4, F4, G4, A4, B4, C5. The notes are grouped with a slur and repeat signs at both ends.

BREAKDOWN

x 8

Musical staff in bass clef with a key signature of three sharps. The staff contains a sequence of notes: G2, A2, B2, C3, D3, E3, F3, G3, A3, B3, C4, D4, E4, F4, G4, A4, B4, C5. The notes are grouped with a slur and repeat signs at both ends.

I AIN'T AFRAID OF NO GHOST

Musical staff in bass clef with a key signature of three sharps. The staff contains a sequence of notes: G2, A2, B2, C3, D3, E3, F3, G3, A3, B3, C4, D4, E4, F4, G4, A4, B4, C5. The notes are grouped with a slur and repeat signs at both ends.

OUTRO

R & R

Musical staff in bass clef with a key signature of three sharps. The staff contains a sequence of notes: G2, A2, B2, C3, D3, E3, F3, G3, A3, B3, C4, D4, E4, F4, G4, A4, B4, C5. The notes are grouped with a slur and repeat signs at both ends.