

# EVERYBODY

SISTER HAZEL

**INTRO**

A D F#m E 2

**VERSE**

A D F#m E 4 4

**PRE-CHORUS**

D E 2

E

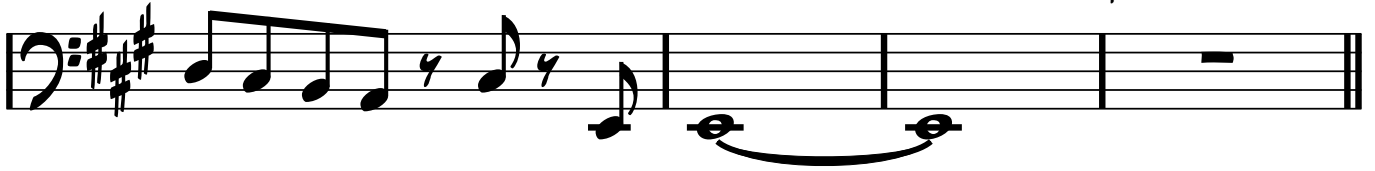
**CHORUS**

A D F#m E 4 4

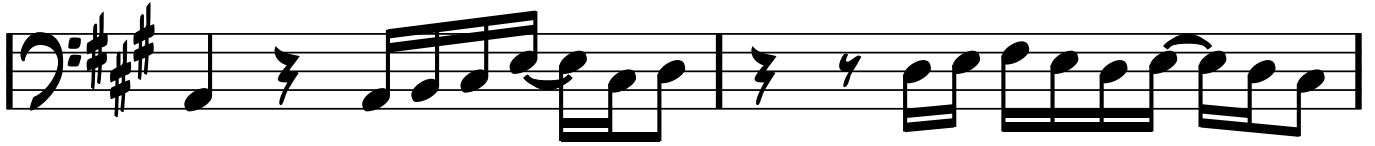
**MIDDLE 8**

FILL

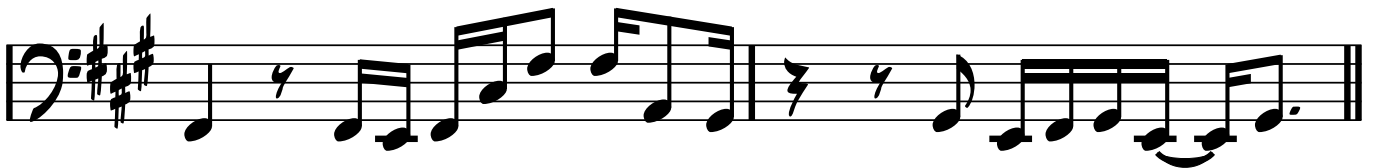
GUITAR



UNISON RIFF



1/2 VERSE



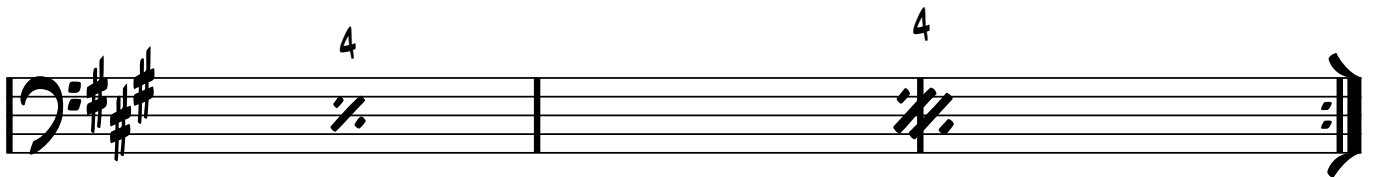
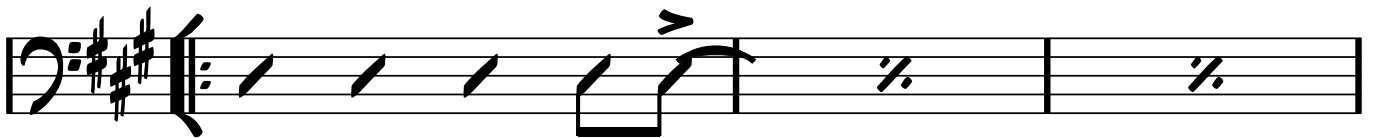
CHORUS

A

D

F#m

E



INTRO

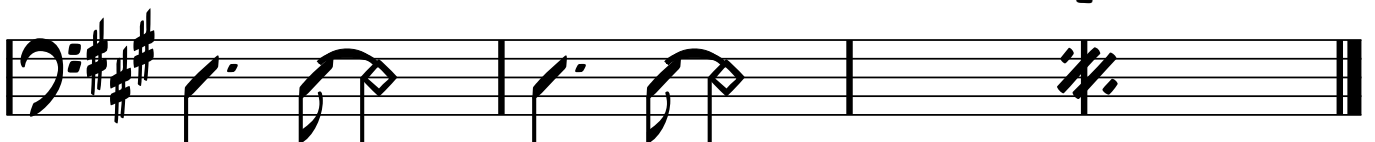
A

D

F#m

E

2



HOLD LAST CHORD TO FADE